

## **Instructions for a 1952-1954 Chevy Truck Altman Easy Latch Kit**

**PLEASE READ THIS NOTICE BEFORE BEGINNING ANY PHASE OF INSTALLATION!!!!**

**This kit is designed to be installed by someone with a fair amount of mechanical aptitude. However, if you are not comfortable making a cut in your door or altering the items mentioned in these instructions it is advised to seek the help of a professional.**

**This kit requires a minimum door gap 5/32" Any smaller gap may cause rubbing of screw heads in the door jam resulting in damage to paint and or body. This can be helped by sanding down and polishing the bolt heads, to allow more clearance. Please check door gap before beginning.**

**This kit will NOT fix door alignment problems. Please adjust your door and get it fitting properly before beginning installation. This is done best with no latches in the door at all. Make the door fits nicely in the opening.**

**If you have gaskets that make it hard to close the door or hold the door out this kit will NOT help this issue. The best thing to do is get gaskets that allow your door to close flush with the other panels when properly aligned.**

**No Altman Easy Latch Kit will allow you to lock your door by pushing forward on the interior handle. It is advised to use electric lock actuators or fabricate your own lock rods.**

1. Begin by Removing your interior door handle and window crank. Remove your interior trim panel, door latch regulator, window, window track, door latch, and striker assembly.
2. Locate the template provided with your new latch kit. Place the template against the door. Align the template with the large oval hole on the inside of your door and the hole where the stock latch was previously located. (fig. 1, 1A, 1B and 1C) Tape the template in place and carefully trace around the template. Remove the template and using a cutoff wheel or a saw, cut along the line and remove this section of the door.
3. Place your new jam plate up to the door making sure to align the bottom hole with the factory hole still in your door. (fig. 2) While holding the jam plate firmly in position, mark the other mounting holes to be drilled. (fig. 3) Also mark the half circle shape at the bottom of the plate. This will be used for attaching your linkage later. Remove the jam plate, and using a 1/4" drill bit, drill your mounting holes. Then using a hole saw or step drill, drill out a hole measuring 1" in diameter in the location you marked the half circle..
4. Locate the template marked "Interior Strap". Align it with the hole in your door indicated in the picture. (fig. 4, 4A, and 4B) Trace around the template and cut this section out. This hole will allow your new interior strap to enter the door and attach to your new bear claw latch assembly.
5. Place your jam plate back into position and bolt it in using the provided hardware. **Pay close attention during this step to use the 1/4" X 1/2" bolt in the hole indicated in (fig. 5)** Using a longer bolt will result in interference with the bear claw latch assembly.

**Note: This is a good time to liberally lubricate all moving latch and lock parts before its final placement in your door. We recommend using a marine quality grease.**

6. Attach your new bear claw latch assembly to the jam plate from the inside of the door using the hardware provided. Using your finger or a screwdriver, close the latch and trip it using the outside handle a few times to make sure there is no interference.

7. Locate your interior door handle regulator and you will notice that the strap attached to it is done so by a small rivet. Drill or grind this rivet and detach the strap from your interior door handle regulator. (fig. 6) Next, you will attach the new strap provided with your Altman Easy Latch Kit. If you look closely at your new strap you will notice that the end with all of the holes also has notches above a few of the holes. These notches indicate the best location to attach the interior door handle regulator. For this application, the best hole to use is indicated by the second notch from the end. Attach the strap to the regulator using the provided 8-32 screw and nut. (fig. 7 and 7A) **Do not over tighten as this is a pivot point.**

8. Feed the strap through the hole in your door and reattach your interior handle regulator. Attach the other end of the new strap to your new latch using the provided 8-32 screw and nut. (fig. 8) **Do not over tighten as this is a pivot point.** Once you are happy with the hole location on the strap, you can cut off the excess overhang above the interior handle regulator.

9. Grind off or hammer and dolly down the small bump on your window track. (fig. 9) Install your window track. Latch and release your new latch a few times using a screwdriver and your interior handle to make sure that everything is working freely.

10. Attach your new striker plate in the stock location and try to align the striker bolt with the center of your new bear claw latch assembly. If you find that you need to adjust your striker plate towards the highest part of the adjustment you may find that the striker bolt hits part of your pillar. If this is the case, just mark where it is hitting and drill a ½” hole there to allow clearance.

11. Once you have your striker in place gently close your door paying close attention to clearance and how the door feels. If it “climbs” or “drops” while opening and closing, adjust your striker block accordingly.



FIG. 1



FIG. 1A

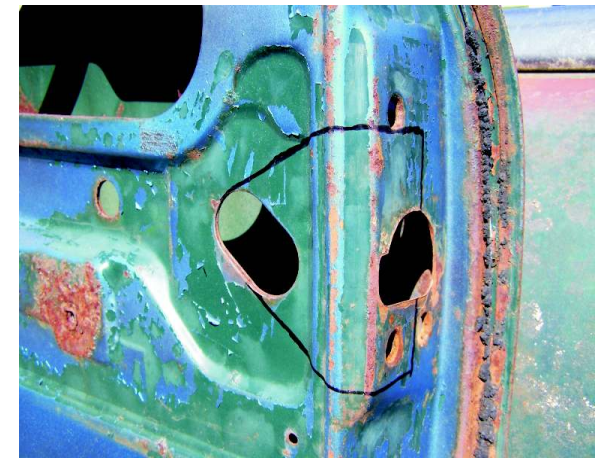


FIG. 1B



FIG. 1C



FIG. 2



FIG. 3



FIG. 4

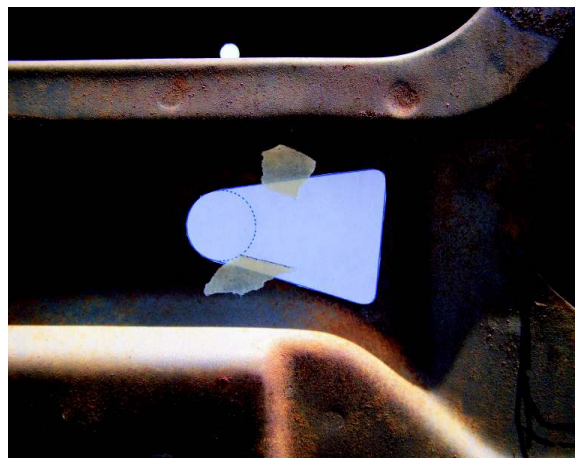


FIG. 4A



FIG. 4B

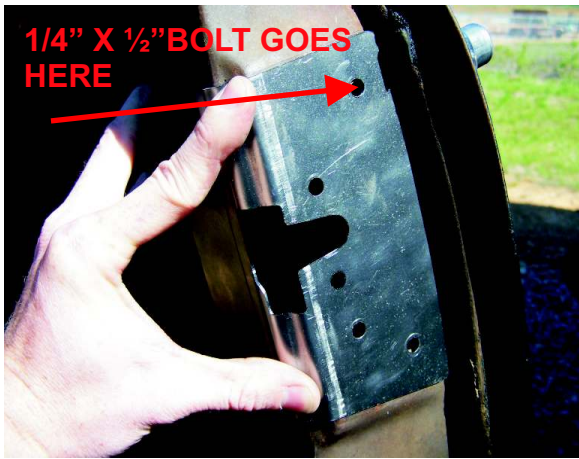


FIG. 5



FIG. 6

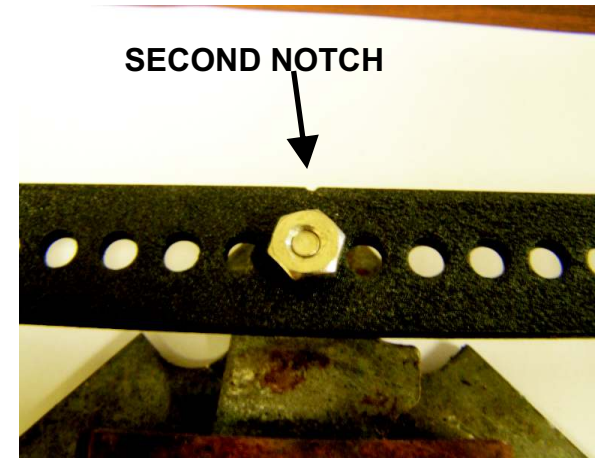


Fig. 7



Fig. 7A

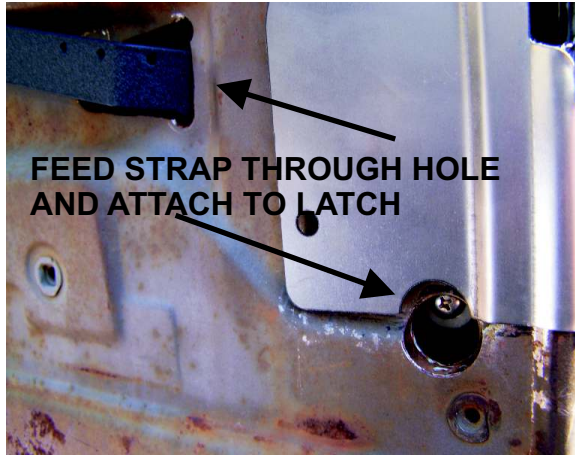
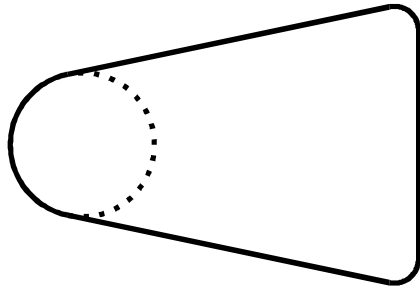


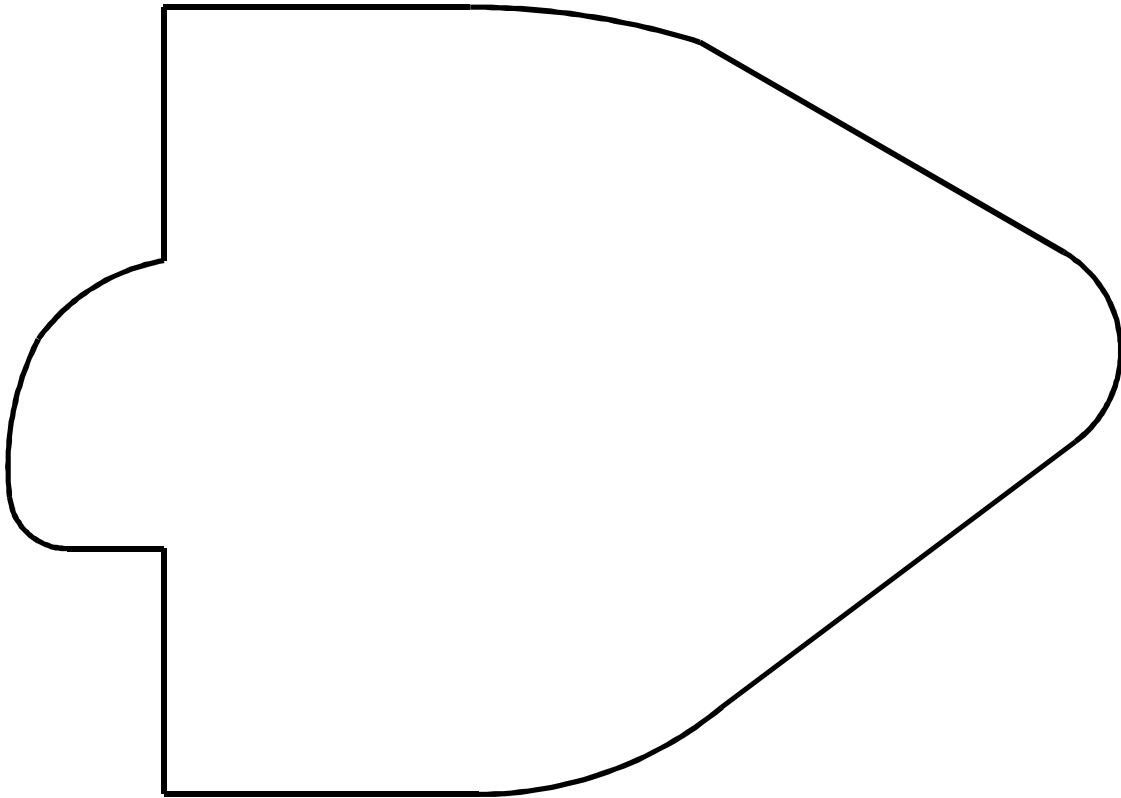
Fig. 8



Fig. 9



**Interior Strap**



**Latch Cutout**