

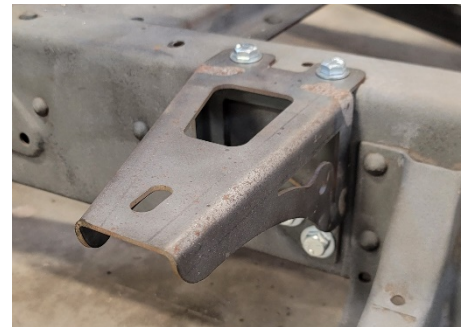


Apicella Designs

Rear Cab Mounts

Fits 47-53 Chevy 3100 Trucks

Thank you for purchasing the **Apicella Designs** 3100 Rear Cab Mount Kit. Please read and review ALL instructions prior to installation. **Apicella Designs** is NOT responsible for any personal or property damage deriving from the modification and/or installation of this product. ALL modification and/or installation should be performed by a professional.



Ditch the shackles and mount your cab to the chassis the right way. These **Apicella Designs** Rear Cab Mounts are the perfect solution for your ride. Whether welded or bolted on we assure you a solid, quality fit. Easy to follow instructions make this upgrade a breeze to install.

Inquiries? Email us at

Info@adcustoms.com

Parts List

Cab Mounting Hardware Kit

- 2 – Apicella Designs 47-53 Chevy Rear Cab Mounts
- 2 – 3/8-16 x 3" Gr 8 Bolt (Cab Front)
- 2 – 3/8-16 x 3 1/2" Gr 8 Bolt (Cab Rear)
- 4 – 3/8-16 Gr 8 Nyloc Nut
- 8 – 3/8 Double Thick Fender Washer
- 10 – 3/8 x 2" Large Fender Washer
- 4 – 11/16 x 2" Polyurethane Bushing (Front & Rear)
- 2 – 1 5/8 x 2" Delrin Spacer (Cab Rear)

Hardware to bolt cab mounts to chassis is **NOT INCLUDED!**

Suggestions on hardware to use are included in the instructions.

1947 Chevy 3100 Addendum

The 1947 Chevy 3100 does **NOT have existing holes to locate these aftermarket mounts, therefore, you must **SKIP** to **STEP THREE** to get the proper measurement for rear cab mount location. The rear cab mounts should locate slightly behind the center running board mount. Also, there are no holes in the cab floor. It would be best to install rear cab mounts, place cab on chassis and square up, then drill appropriate holes using rear mounts for location. Whether bolting on or welding, it's best to carefully measure your rear cab mount location to assure proper fit.**

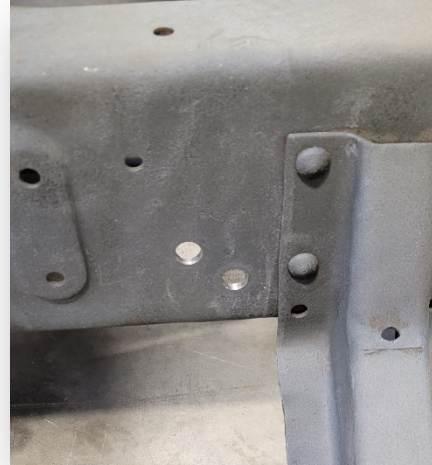
ATTENTION!

TO PROPERLY INSTALL THE APICELLA DESIGNS 3100 REAR CAB MOUNT KIT THE CAB MUST BE REMOVED FROM THE CHASSIS. DO NOT ATTEMPT REMOVING THE CAB WITHOUT SUFFICIENT KNOWLEDGE, ADEQUATE TOOLS, AND PROPER SAFETY MEASURES! DOING SO COULD LEAD TO SEVERE PROPERTY DAMAGE, INJURY, OR DEATH! APICELLA DESIGNS LLC ASSUMES ZERO LIABILITY FOR SUCH OCCURANCES.

Chevy 3100 Rear Cab Mounts

Step 1:

Once cab is removed from the chassis, locate two holes where rear shackles were mounted. Drill holes to 7/16" in diameter.



Step 2:

We recommend using 7/16-14 x 1 1/4" bolts to mount to the existing shackle holes in the chassis. If the cab mount doesn't sit square to the chassis, use the included 7/16" double thick washers between the cab mount and the chassis. (Pictured)



Step 3:

Now it's time to measure. The center of the **front** cab mounting hole to the center of the **rear** cab mounting hole should measure 36 3/4". Measure both driver and passenger side. Center to center mounting holes on the **front** cab mounts measure 47", while the center to center mounting holes on the **rear** cab mounts measure 49 3/8". Note that the mounting holes are slotted, so these measurements are approximate. Get your measurements as close as possible and tighten all hardware on rear cab mounts.

STOP!

DOUBLE CHECK ALL MEASUREMENTS PRIOR TO DRILLING! DOUBLE CHECKING ALL MEASUREMENTS ASSURES THE FIT AND FINISH OF YOUR APICELLA DESIGNS PRODUCT! THE CUSTOMER ASSUMES ALL LIABILITY FOR ANY MODIFICATION TO THIS PRODUCT AND/OR THE VEHICLE BEING MODIFIED.

Step 4:

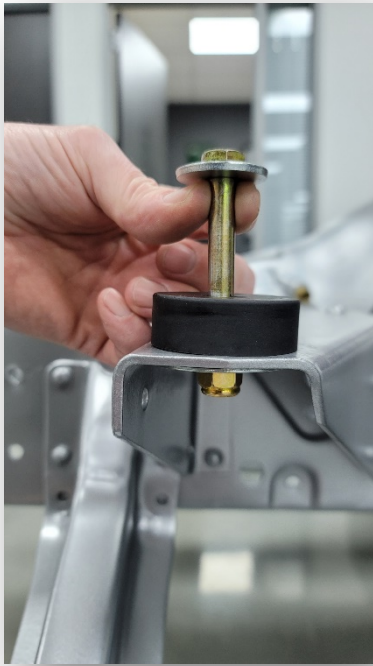
Once you have assured that your measurements are correct and all hardware is tightened, it is time to drill your holes on top of the cab mounts. We have conveniently punched 1/8" holes in the top of the mounts as a guide. Carefully drill 1/8" pilot holes through the chassis.



Step 5:

The final step is opening your pilot holes to 3/8". We personally like using a step bit for this, it keeps it easy and clean. Deburr your holes after drilling and install the 3/8-16 x 1 1/4" bolts, washers, and nuts (not included).





Step 6:

Before placing the cab on the chassis, you'll need to place your bushings and spacers accordingly. The front mounts (pictured left) each get a polyurethane bushing **only**. The bushing should sit directly on top of the front cab mount. A 3/8" double thick fender washer sits inside the cab. A 3/8 x 2" large fender washer sits directly beneath the front cab mount. The front cab mount uses a 3/8-16 x 3" Grade 8 bolt and Nyloc nut.

The rear cab mount (pictured right) has the same setup except for the addition of 1 5/8 x 2" Delrin spacer located directly below the polyurethane bushing. The order will be (1) 3/8" double thick fender washer, cab floor, (1) 11/16 x 2" polyurethane bushing, (1) 1 5/8 x 2" Delrin spacer, rear cab mount, 3/8 x 2" fender washer. The rear cab mount uses a 3/8-16 x 3 1/2" Grade 8 bolt and Nyloc nut. Double check the tightness of all bolts during assembly.



And that's it, another solid solution from **Apicella Designs!** Check out www.apicelladesigns.com/shop for additional products and information. Don't forget to tag us in your pics on www.facebook.com/apicelladesigns and on [Apicella Designs \(@apicelladesigns\)](#) • [Instagram photos and videos!](#)