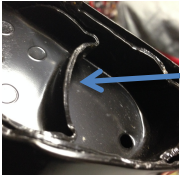


Thank you for purchasing,

**The original Silent 'Gate as seen in Classic Truck Magazine & Hot Rod.
1967-1972 Chevy / GMC Truck Fleetside Tailgate trunnion - Ultimate hinge Trunnion
(6 Piece Set) Stainless Steel/Delrin "Patent pending"**

Remove the tailgate, by removing the old trunnion bracket on each side of the tailgate. Before installing the new stainless steel trunnions.

Inspect the tailgate female flanges pockets where the trunnions are to be installed. Ensure that it is clean or all debris, paint build up, dirt and heavy rust before installing the delrin bearing. After it is clean and ready for installation, size it up. There might be adjustments you need to make so it will fit properly. Install the female delrin bearing on each side of the tailgate lining up the flat edges front to back as seen in the picture. You may need to tap the flange on the inside of the tailgate either open or closed a little (with a hammer) as seen below in illustration below.



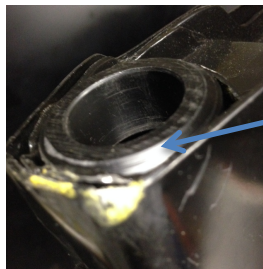
Small adjustments might be needed to make a perfect fit, with a hammer you could tap the edge of the pocket in or out to tighten or loosen the fit.

If it goes in tight it will be very difficult to install the trunnion ball and will be tight while opening and closing the tailgate. It should go in and be flush with the edge of the tailgate or just below flush to the edges of the tailgate. Please note: if it is not flush, remove it and sand the backside (with no bevel). You can sand it using a grinder or sand paper. The edges of the Delrin bearing can be sanded to make it fit better as well.

Any past damage to the tailgate or mounting area could alter the installation ease and would require additional attention and alterations. Every tailgate has a history and is different in their own way. You have to make it fit the best way you know how.



Flat edges on each side, installed where it fit best, prevents it from spinning



Depending on your tailgate the delrin (black piece) with Beveled edge could be installed inside the cup pocket or like it is shown – Ensure it's Installed flush or just below flush of the tailgate edges.

You can then install the new stainless steel trunnion hinge assembly and the tailgate back on as originally installed, using your original hardware or upgrade to stainless steel. Be sure to use anti-seize grease with stainless steel items on reassembly. Have someone help you hold them the tailgate in place as you get the bolts back in. Don't tighten the bolts all the way until you get the fit just right. Enjoy!

For questions, please let me know at tmdenis@tdtrunniondesign.com

Check out our YouTube for Installation
https://youtu.be/M3Gj_mXnrPQ