

Thank you for purchasing,

**The original Silent 'Gate as seen in Classic Truck Magazine & Hot Rod.
1975-1980 Chevy / GMC Truck Fleetside Removable Tailgate trunnion - The
Ultimate Trunnion hinge kit (6 Piece Set) Stainless Steel/Delrin**

"Patent pending"

Like Factory removable tailgate. Anti-seize has been applied to the bolt.

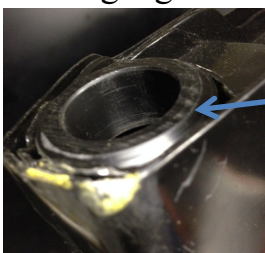
Remove the tailgate, by removing the old trunnion bracket on each side of the tailgate. Before installing the new stainless steel trunnion.

Inspect the tailgate female flanges where the trunnions are to be installed. Ensure that it is clean or all debris is removed, paint buildup, dirt and heavy rust before installing the delrin bearing. After it is clean and ready for installation, size it up. There might be adjustments you need to make so it will fit properly. They are stamped left and right for each side. Any past damage to the tailgate or mounting area could alter the installation ease and would require additional attention and alterations. Every tailgate has a history and is different in there own way. You have to make it fit the best way you know how.



Pre-check to ensure proper installation. Test fit the female delrin bearing on both sides. If it goes in tight it will be very difficult to install the trunnion bracket (stainless) ball and will be tight while opening and closing the tailgate. You could sand the edges of the Delrin bearing (black parts) to make it fit better, tight but not to tight. Go slow and it just might need to be sanded a little more, the key is that you don't want the delrin (black part) to spin at all. Continue to check

Fit; ensure it is not too loose preventing the piece from spinning inside the tailgate. When installed it should be close to flush with the tailgate edge or just below flush to the edges. Please note: if it is not flush, remove it and sand the backside it is very easy to sand to make fit better as well. You can sand it using a grinder or sandpaper.



Depending on your tailgate the delrin (black piece) with Beveled edge could be installed inside the cup pocket or like it is shown – Ensure it's Installed flush or just below flush of the tailgate edges.

You can then install the new stainless steel trunnion hinge assembly on the bed and the tailgate as originally intended. Using your original hardware to mount them. Don't tighten the bolts to tight just for adjustments or until you get the fit just right. Once it's closes and adjusted tailgate correctly you can tighten the lower bolts. Open the tailgate and tighten the upper bolts. Enjoy! For questions, please let me know at tmdenis@tdtrunniondesign.com.

Check out our YouTube – Installation

<https://www.youtube.com/watch?v=5QkyHgoJ3FM&t=448s>